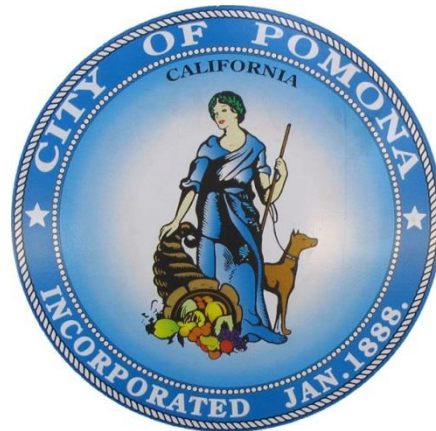


# CITY OF POMONA COMMUNITY MEETING



## District 6

# Pomona's Strategic Plan on Homelessness



## A WAY HOME: COMMUNITY SOLUTIONS FOR POMONA'S HOMELESS

*Strategies to  
Help Pomona's  
Homeless Find  
Their Way  
Home*

Prepared by:  
Benita DeFrank, Neighborhood Services Director  
Jan Cicco, Homeless Services Coordinator

Authorized by the Pomona City Council on January 9, 2017

# Strategic Plan's Core Goals

<b>Goal A</b>	Reduce the Number of Pomona's Unsheltered Homeless
<b>Goal B</b>	Reduce the Negative Impacts on Community Neighborhoods and Public Spaces through the Coordination of Services
<b>Goal C</b>	Have an Engaged and Informed Community Regarding Homelessness and Homeless Solutions
<b>Goal D</b>	Balance the Needs and Rights of Homeless Persons and the Larger Community through Updated Fair, Legal and Enforceable Policies and Ordinances

# Strategic Plan on Homelessness

## URGENT STRATEGIES TO IMPLEMENT

Strategy A1	<i>Establish a Year-Round Shelter(s) Able to Provide for Multiple Subpopulations</i>
Strategy B1	<i>Establish a Service Center for Centralization and Coordination of Services</i>
Strategy B2	<i>Establish a Communal Kitchen for the Provision of Food Services</i>
Strategy B7	<i>Provide Lockers for Storage of Personal Belongings and Implement a Complementary Travel Lite Campaign</i>

# Transitional Storage Center

## 388 Lockers

Opened November 21, 2016



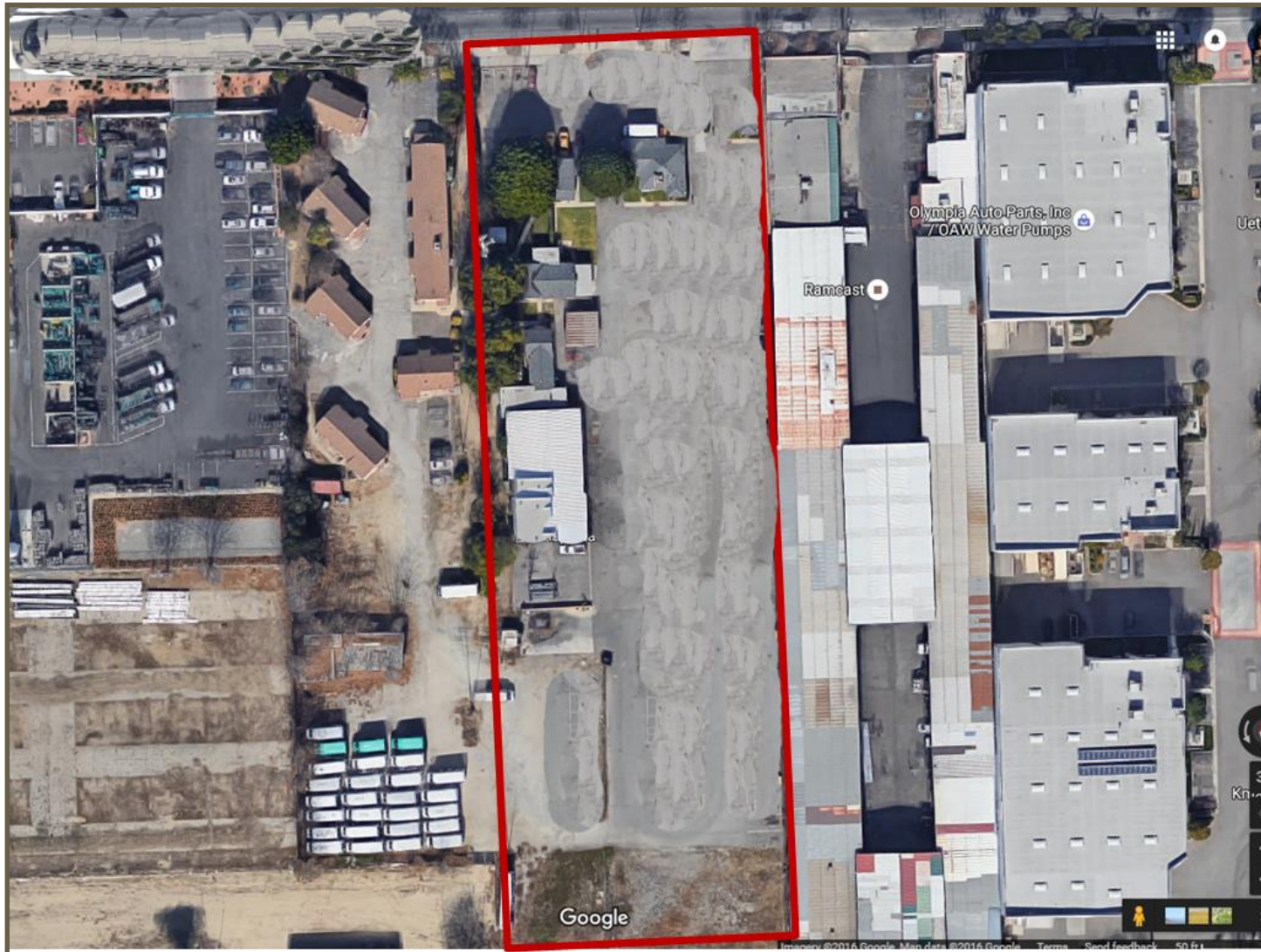
- 581 Clients Served
- 288 Active Lockers
- 50 Individuals Sought Housing as a result of Locker Program

# Centralized Service Center

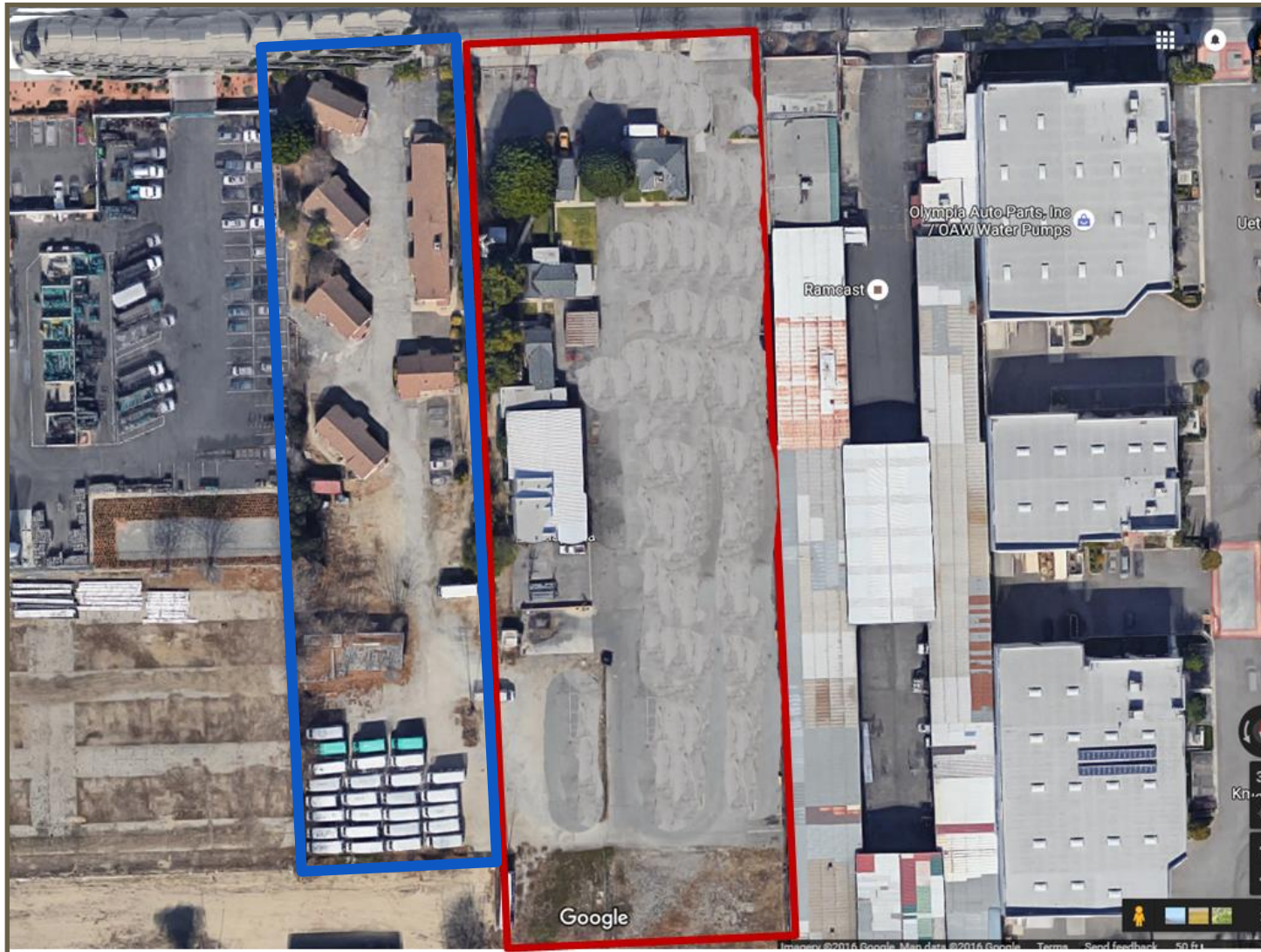
September 2016	City Council Declares a Shelter Crisis within the City
November 2016	Council Authorizes Purchase of 1400 E. Mission to be used to develop a Year-Round Emergency Shelter
January 2017	City Council Approves Conceptual Site Plans
March 2017	City Departments Walk-through Shelter Site
June 2017	CSC Site Operator Request for Qualifications Released
	Design Build Team Request for Qualifications Released
July 2017	Award of Contract to CSC Site Operator
August 2017	Short List of Design Build Contractors Chosen



# 1400 E. Mission Blvd.



# 1390 E. Mission Blvd.





# Centralized Service Center Site



Together property area equals over 4 acres of land for development of the Centralized Service Center site

# Centralized Service Center

- Year Round 24-hour Shelter for single adults
- Basic Services/Amenities
  - Security Personnel
  - Restrooms and Showers
  - Laundromat
  - Communal Kitchen
  - Storage Lockers
  - Day Use Space
  - Dog Kennel
- Housing Focused Services
  - Coordinate Entry
  - Street Outreach
  - Document/Benefits Attainment
  - Diversion Services
  - Housing Navigation
- Basic Health Care/Referrals
  - Basic Primary Care
  - Behavioral Health Care

# Site Operator and Site Partners

Site Operation/Housing Services/Street Outreach

- **Volunteers of America Los Angeles**

Health Services

- **East Valley Health Partners**

Mental Health Services

- **Tri City Mental Health Center**



# Partner Opportunities

- Dental Services
- Food Provision
- Employment Services
- Mentoring/Compassionate Companions
- Lived Experience/Peer Support Services
- Clothing Provision
- Grooming Services
- Housing Provision/Housing Unit Readiness
- Transportation Services
- Legal Services
- Pet Pals
- ETC., ETC., ETC

# Centralized Service Center Timeline

- ✓ Site Operator
- ✓ Short List of Contractors for Design Build Team Developed
  - August 2017 – Purchase of 1390 E. Mission Blvd
  - August 31<sup>st</sup> – Design Build Team Bids Proposals Due
  - September 12<sup>th</sup> – 26<sup>th</sup> Demolition of Site Buildings
  - September 18<sup>th</sup> – Award of Design Build Team Contract
  - October 9<sup>th</sup> – Finalize Architectural Design
  - October 16<sup>th</sup> – Notice to Proceed on Construction
  - March 2018 – Site Anticipated to be Operational



# 2017 Point-in-Time Homeless Count

# 2017 Point-in-Time Homeless Count

- The point-in-time count is a one day snapshot of homelessness that captures data on both sheltered and unsheltered homeless individuals and families.
- On January 24, 2017, the City of Pomona, in coordination with LAHSA, participated in this count with 64 volunteers.
- 16 different agencies assisted with the Pomona count, as well as some City staff, City Council Members and City Commissioners.
- The count covered all 31 census tracts within Pomona.
- 53% of those who volunteered to count that night were Pomona residents.

# 2017 Pomona Homeless Count Results

**Total Point in Time Count –  
877 Homeless Persons**

**Unsheltered**

**390**

**Sheltered**

**487**

# 2017 vs. 2016

## Pomona Homeless Point in Time Count

	<b>Total</b>	<b>Sheltered</b>	<b>Unsheltered</b>	<b>Individuals</b>	<b>Families</b>
2017	877	487	390	631	246
2016	689	323	366	552	137
+ / -	188	164	24	79	109
	27.29%	50.77%	6.56%	14.31%	79.56%

# Sheltered vs. Unsheltered

## SHELTERED

A homeless person or persons living in emergency or transitional housing on the night of the point-in-time count

487

**Family  
Members**

**Individuals**

249

238

## UNSHELTERED

A homeless person or persons living in a place not meant for human habitation, such as cars, parks, sidewalks, abandoned buildings (on the street).

390

**Families  
Members**

**Individuals**

8

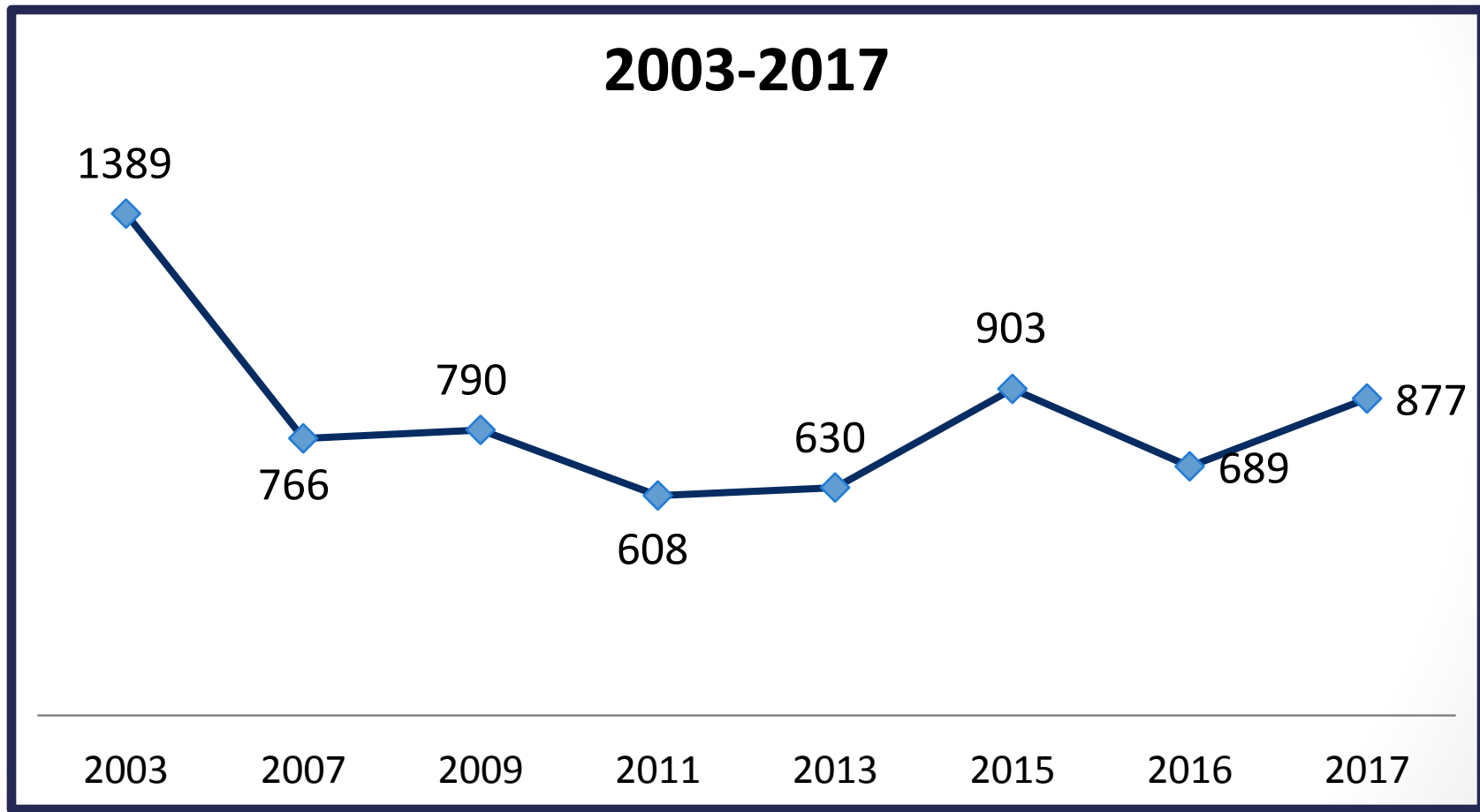
382



# Sheltered Count

SHELTER ORGANIZATION	PROGRAM NAME	2016	2017	CHANGE
CA Hispanic Commission on Alcohol and Drug Abuse (CHCADA) - New Crisis Housing program funding	FSC Emergency Crisis Beds	0	15	15
Inland Valley Council of Churches	Our House Shelter	12	8	-4
LA County Dept of Public Social Services (DPSS) - Increase in funding for motel vouchers available for CalWorks families	Cal Works Homeless Assistance Voucher Program	45	112	67
Volunteers of America Los Angeles (VOALA) - New Crisis Housing Program	Crisis and Bridge Housing	0	13	13
Volunteers of America Los Angeles (VOALA)	Winter Shelter Program - Pomona	131	146	15
City of Pomona - This program lost funding as of 4/1/2017 due to change of direction by HUD	Pomona Transitional Living Center	5	3	-2
Prototypes - Expanded bed occupancy in Transitional Housing Program	Women's Transitional Living Center	84	190	106
<b>TOTALS</b>		<b>277</b>	<b>487</b>	<b>210</b>

# Pomona Point-in-Time Homeless Count



# LOS ANGELES CONTINUUM OF CARE OVERVIEW

Los Angeles COC	Total	Sheltered	Unsheltered
2017	55,188	13,972	41,216
2016	43,854	11,073	32,781
Difference	11,334	2,899	8,435
	<b>25.84%</b>	<b>26.18%</b>	<b>25.73%</b>
SPA 3 – San Gabriel Valley	Total	Sheltered	Unsheltered
2017	3,552	1,179	2,373
2016	2,612	950	1,662
Difference	940	229	711
	<b>35.99%</b>	<b>24.11%</b>	<b>42.78%</b>
Pomona	Total	Sheltered	Unsheltered
2017	877	487	390
2016	689	323	366
Difference	188	164	24
Increase	<b>27.29%</b>	<b>50.77%</b>	<b>6.56%</b>