

WATERSHED MANAGEMENT in the EAST SAN GABRIEL VALLEY WATERSHED

Help us improve water quality in the East San Gabriel Valley Watershed! We are interested in hearing about your project ideas, community needs, and possible opportunities to work with others in achieving water quality goals.

What is a stormwater permit?

Stormwater and urban runoff (such as sprinkler overflow) travels over our city streets, sidewalks, and other non-permeable surfaces, and enters the storm drain system. In order for cities to operate their storm drains, they must obtain a stormwater permit. In 2012, a new permit was adopted by the Los Angeles Regional Water Quality Control Board. The permit is intended to provide multiple benefits, consisting of, but not limited to:

- Protecting water quality in our rivers, streams, lakes, reservoirs, beaches and the ocean.
- Protecting human, aquatic, and wildlife health.
- Providing opportunities to capture and use the stormwater runoff to recharge our groundwater basins.
- Providing multiple benefits including habitat improvement, aesthetic value, and recreation areas.

Who is affected by it?

The permit affects the entire County of Los Angeles including the cities, businesses, and residents. In short, we are all responsible for doing our part to maintain water quality in our respective watersheds.

What is a Watershed?

A watershed is defined as the area of land that includes a particular river or lake and all the rivers, streams, etc., that flow into it.

What is a Watershed Management Program (WMP)?

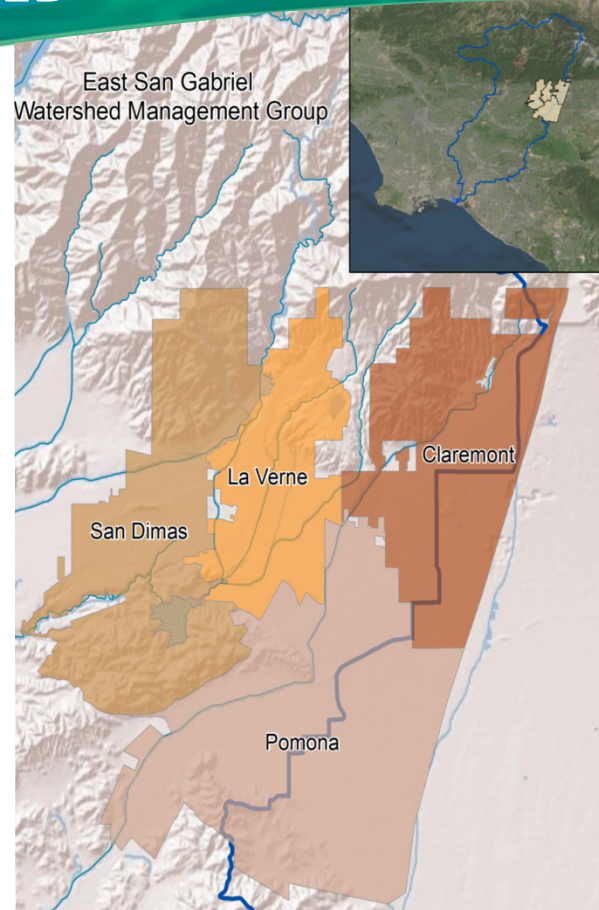
The County and cities are currently developing a WMP to address the requirements of the permit. The WMP will identify potential project locations, Best Management Practices (BMPs), and a comprehensive monitoring program. The WMP will adapt to include new data and information over time. Once implemented, the WMP will serve as a road map to improve water quality in the watershed.

When does the Watershed Management Program take effect?

The Watershed Management Program is currently being reviewed By Regional Water Quality Control Board Staff. The Program will provide a thorough foundation for new stormwater management practices.

Why is this important?

The Watershed Management Program is a large, coordinated effort and requires the support of many organizations and individuals, including you, in order to be a success. If developed and implemented correctly, the program can help restore the health of our waters and provide sustainability for years to come. We welcome you to participate in the protection of our valuable water resources.



How can you help?

We want to hear from you! We would greatly appreciate feedback from you, including:

- Help on identifying locations for projects that capture/treat stormwater runoff
- Ideas on how to reduce urban runoff
- Providing feedback on stormwater management projects
- Assisting us in identifying stakeholders as potential teaming partners
- Ideas on funding sources and partnership opportunities

Please see attached form to submit project information. Email completed form and any questions to:

City of Pomona
Attn: Julie Carver
Environmental Programs Supervisor
505 South Garey Avenue
Pomona, CA 91766
(909) 620-3628

WATERSHED MANAGEMENT IN THE EAST SAN GABRIEL VALLEY WATERSHED - PROJECT INFORMATION FORM

Please E-mail completed form to:
Julie_Carver@ci.Pomona.ca.us

Name of Project Sponsor:

Contact Information (Phone/Email):

Project Name:

Type of Project:

Current Phase of Project: Conceptual Planned Existing

Project Location (LAT/LON or Street Address):

Description of Project: